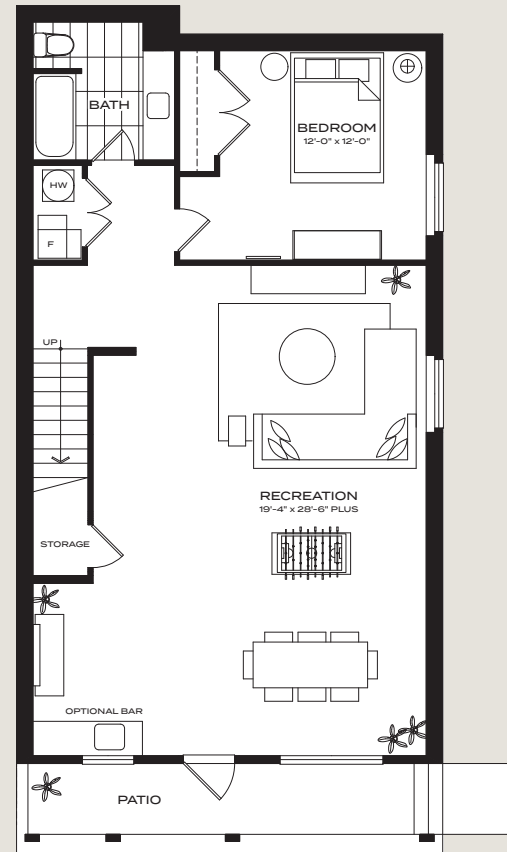
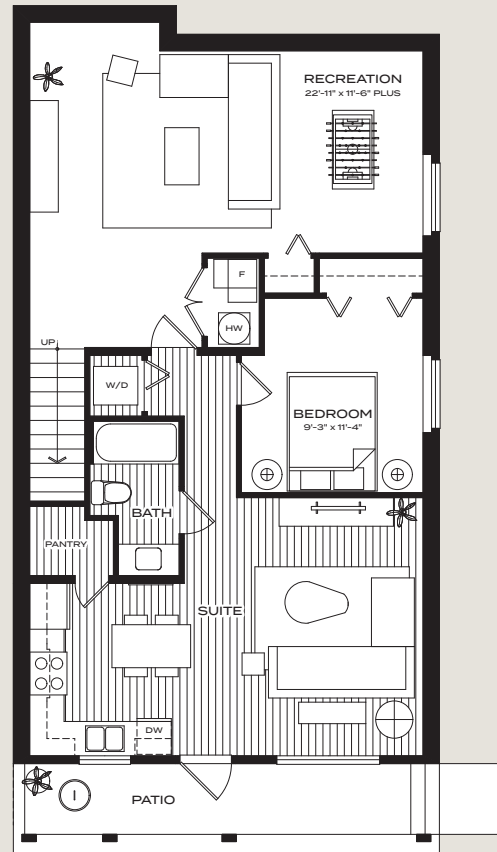


OXFORD

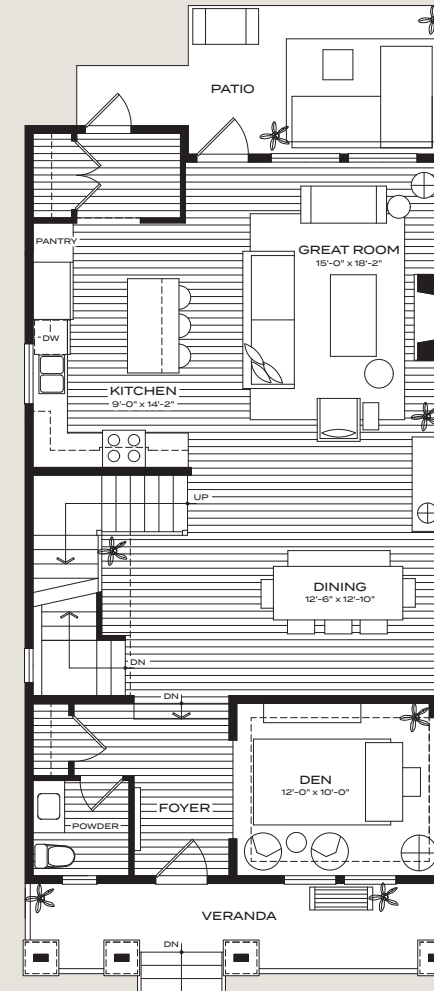
4 BEDROOM + DEN 3.5 BATHROOM
3,178 TOTAL SQ. FT.



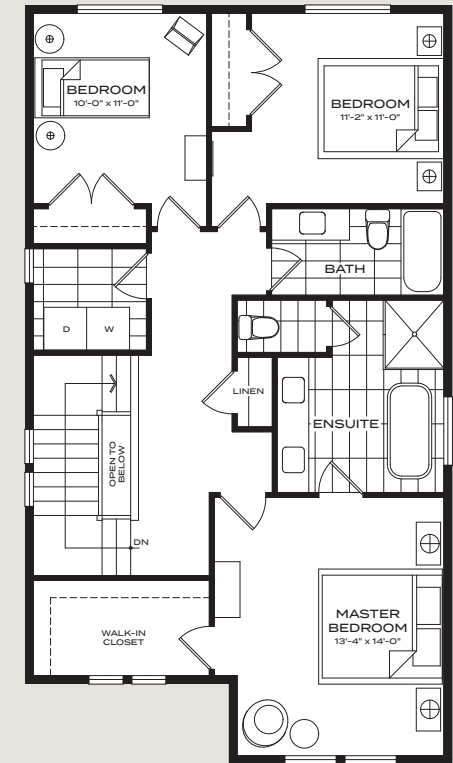
LOWER 1,072 SQ FT



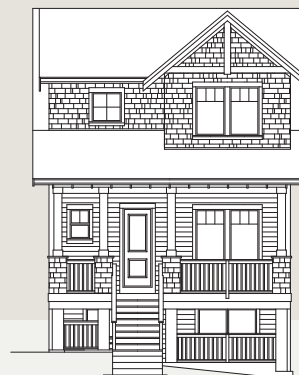
LOWER WITH OPTIONAL
LEGAL SUITE 1,072 SQ FT



MAIN 1,075 SQ FT



UPPER 1,031 SQ FT



FRONT ELEVATION A



FRONT ELEVATION B



FRONT ELEVATION C

The Builder reserves the right to make modifications and changes to the building design, elevations, dimensions, specifications, features and prices, without prior notification. Decks, patios, stairs and windows may vary based on site conditions. Variances may include materials, sizes, and/or locations as well as the number of steps into and out of the home. All sizes and dimensions are approximate and based on Architectural measurements. Reverse and/or mirror plans occur throughout the development. Renderings are artist's conception and intended as a general reference only. See the sales representative for details. E. & O.E.